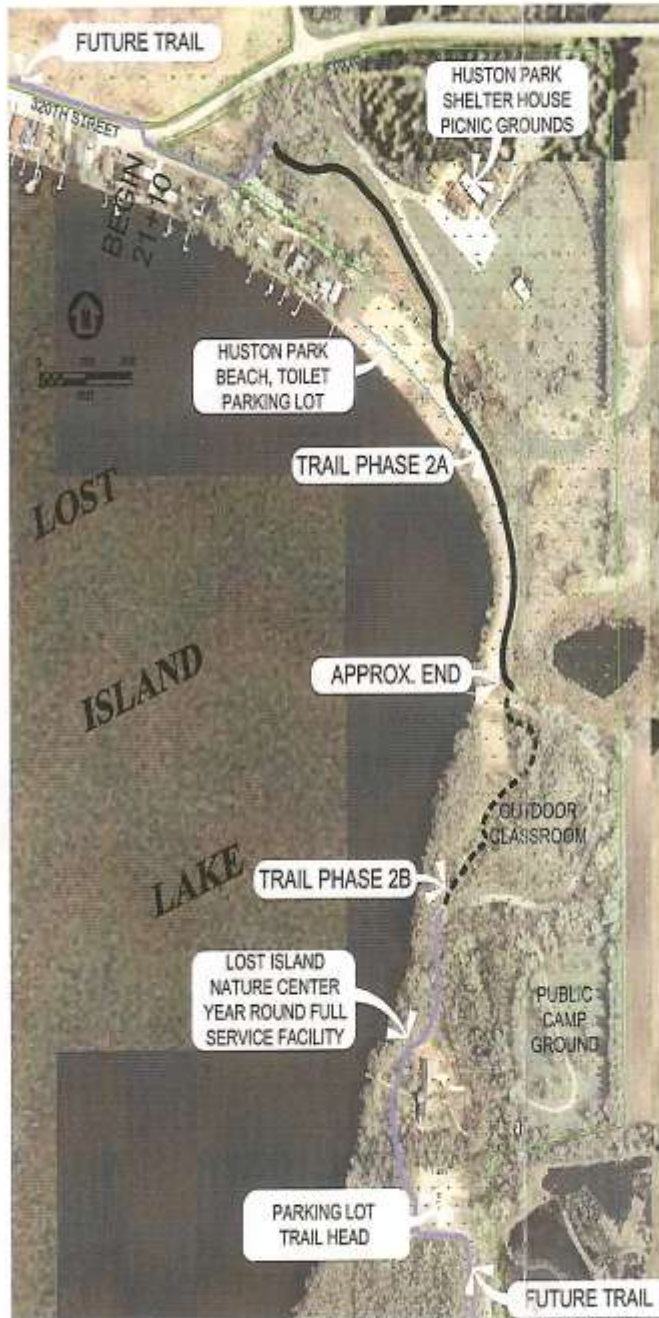


Lost Island Trail Project



Pictures above illustrate the work that has been done.

WELCOME TO THE LOST ISLAND TRAIL

Starting with a grant from the Palo Alto County Gaming Development Corporation and local donations, construction of the bike trail has begun. The first phase of the project is the cornerstone of the trail plan for the Lost Island Lake area.

Trail construction has started on the northeast portion of Lost Island Lake from the corner "Y" of 320th Street, down through the beach area, and to the boat ramp. This will be 1,750 feet of concrete path, ten feet wide, designed for pedestrian and bicycle traffic. Construction will continue through the woods heading toward the Nature Center. The map on the left illustrates the proposed and future trail.

Entering into the next phase of the trail, we will continue to proceed with local support and available grants. We are fully aware that there is much work to do. The start of this trail will increase public awareness and an appreciation of the progress being done, creating a vision of things moving forward.

Projects of this magnitude take time and the outlook is very promising. The Lost Island Trail project will provide a safe biking/walking/running environment for citizens of Palo Alto County, enabling health conscious individuals the opportunity to exercise while connecting with nature.

Support is an important component! Generations to come will appreciate our concerted efforts now in constructing a trail that affords endless possibilities for a wide range of interests throughout the four seasons.

LOST ISLAND PROTECTIVE ASSOCIATION

"To encourage and to promote high environmental quality of the lake area. We support the steps that are essential to maintain the continuing proper usage of Lost Island Lake and its surroundings."

Thank you

Your support of the Lost Island Trail project is appreciated. All donations are tax deductible:

_____ \$25 _____ \$250
_____ \$50 _____ \$500
_____ \$100 _____ \$1,000
Other \$ _____

Name _____

Address _____

City/State/Zip _____

Send your donation payable to:
Lost Island Protective Association
P.O. Box 383
Ruthven, IA 51358

We have made a lot of progress and could not do it without your help.

Your generosity is appreciated!

Growth and the Quality of Life

now and for future generations

The Lost Island Lake area is often referred to as 'hub of the wetlands' with lakes, marshes and prairie surroundings. A trail system connecting different amenities would provide additional



recreational opportunities. The proposed project is a recreational trail that will be placed around Lost Island Lake with a connection to the City of Ruthven.

Reality sets in as we complete the first phase of the trail at Lost Island-Huston Park. Let's keep the momentum going.

As future phases develop, the Lost Island Protective Association is determined and willing to take the necessary steps to move forward.

In cooperation with the Palo Alto County Conservation Board and the Lost Island Protective Association, the trail project will enhance and showcase Lost Island Lake and its surroundings. Bird watching, sight-seeing, biking, hiking, or maybe an old fashioned stroll will connect tourists and the public to nature.

Lake residents, the people of Ruthven, and visitors will enjoy the trail for generations to come.

LOST ISLAND TRAIL



PROJECT UPDATE